

고정판

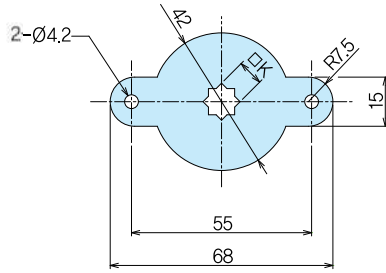
STOPPER PLATES



C-7~8(ss)·SC-7~8(SUS)/C-7K~8K(ss)·SC-7K~8K(SUS)



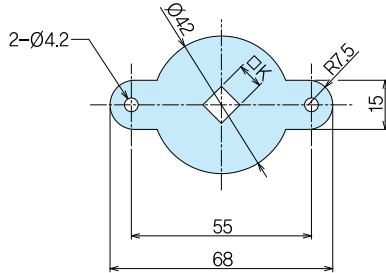
C-7



두께 t = 3(SUS)
Thickness = 3.2(SS)



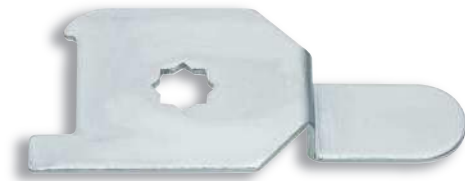
SC-7K



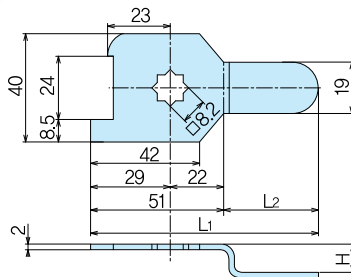
재 질 ●C-7~8/철(SPHC)3.2t
●SC-7~8/스테인레스(SUS304)3t
표 면 처 리 ●C-7~8/백색아연도금
Material ●C-7~8/Hot rolled steel plate (SPHC)3.2t
●SC-7~8/Stainless steel plate (SUS304)3t
F i n i s h ●C-7~8/Plating

품번 Product No.		□K	중량(g) Weight		입수 Lot
SS	SUS		SS	SUS	
C-7	SC-7	8	40.2	37.3	100
C-8	SC-8	10	38.4	35.7	100
C-7K	SC-7K	8	40.2	37.3	100
C-8K	SC-8K	10	38.4	35.7	100

C-9(ss)



C-9-10



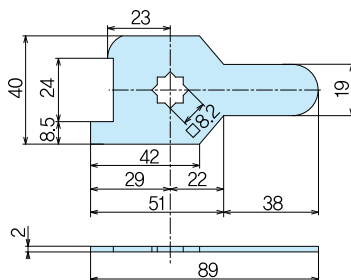
재 질 ●C-9/철(SPCC)2t
표 면 처 리 ●백색아연도금
Material ●C-9/Cold rolled steel plate (SPCC)2t
F i n i s h ●Plating

품번 Product No.	L1	L2	H	중량(g) Weight
C-9-5	88.5	37.5	5	34.5
C-9-10	82	31	10	35.1
C-9-13	80	29	13.5	35.4

C-10(ss)



C-10



재 질 ●C-10/철(SPCC)2t
표 면 처 리 ●백색아연도금
Material ●C-10/Cold rolled steel plate (SPCC)2t
F i n i s h ●Plating

품번 Product No.	중량(g) Weight	입수 Lot
C-10	35	50