

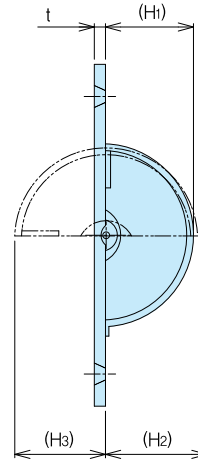
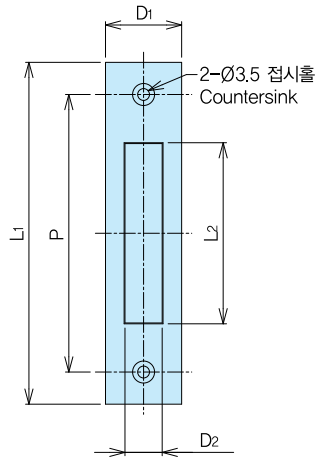
완전회전 손잡이

FULL ROTARY PULLS

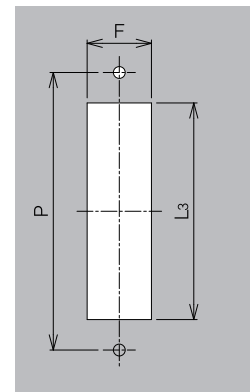
SK-46(SUS)



SK-46-1



■취부홀치수
Dimension of mounting hole



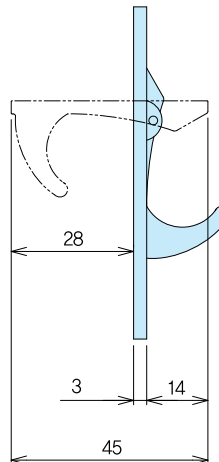
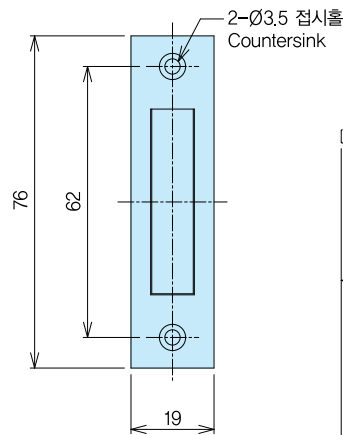
재 질 ●스테인레스(SUS304), 사선부분/철(SPC-1)
표 면 처 리 ●백색아연도금
Material ●Stainless steel(SUS304)
F i n i s h ●Rotary parts/Zinc unichrome plating

품번 Product No.	L1	L2	L2	P	F	D1	D2	(H1)	(H2)	(H3)	t	중량(g) Weight
SK-46-1	101	53.5	64	83.5	19	22.5	11	26	30	26.8	3.3	30
SK-46-2	86	51	52	70	18	20.5	10	20	22	20	3.2	25

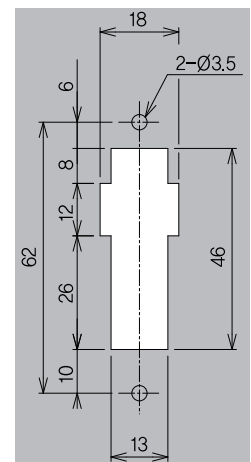
반회전 손잡이

HALF ROTARY PULLS

SK-47(SUS)



■취부홀치수
Dimension of mounting hole



재 질 ●스테인레스(SUS304)
표 면 처 리 ●헤어라인 연마
Material ●Stainless steel(SUS304)
F i n i s h ●Hairline finish

품번 Product No.	중량(g) Weight	입수 Lot
SK-47	15	