

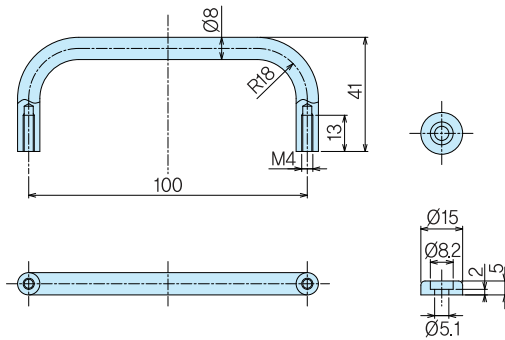
# 손잡이

PULLS

K-32(SS)



K-32



재 질 ●K-32/철(SS)  
표 면 처 리 ●연마크롬도금  
용 도 ●각종 기기, 설비등

Material ●Rolled steel(SS)  
Finish ●Buffing chrome finish  
Specific Use ●Various equipments, facilities, etc

품번 Product No.	중량(g) Weight	입수 Lot
K-32	67	40

손잡이

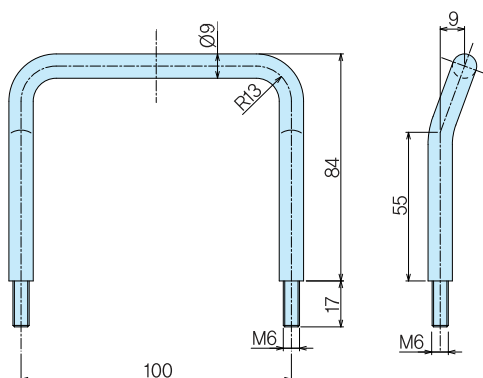
# 손잡이

PULLS

K-33(SS)



K-33



재 질 ●철(SS)  
표 면 처 리 ●연마크롬도금  
용 도 ●각종 기기, 설비등

Material ●Rolled steel(SS)  
Finish ●Buffing chrome finish  
Specific Use ●Various equipments, facilities, etc

품번 Product No.	중량(g) Weight	입수 Lot
K-33	133	10