

스크류 볼트

KNURLED KNOBS

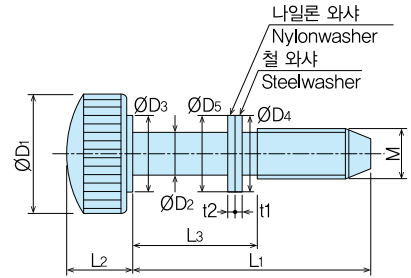
KP-6(ss)



KP-6-2

재질 ●머리부분/유리아수지
 ●나사부분/철(SS)
 표면처리 ●백색아연도금
 용도 ●배전반, 분전반, 제어반, 공작기계 등
 비고 ●나일론 와사, 철와사 포함

Material ●Head/Urea resin
 ●Screw/Rolled steel(SS)
 Finish ●Zinc unichrome plating
 Specific Use ●Distribution, control boards, Machine tools, etc.
 Remarks ●Nylonwasher and Steelwasher are included.



품번 Product No.	L1	L2	L3	ØD1	ØD2	ØD3	ØD4	ØD5	t1	t2	M	중량(g) Weight	입수 Lot
KP-6-3	48	18	30	30	6	16	13	16	3	1	8	40.8	50
KP-6-4	38	18	20	30	6	16	13	16	3	1	8	38.4	50
KP-6-5	28	18	10	30	6	16	13	16	3	1	8	36.6	50

봉인 볼트

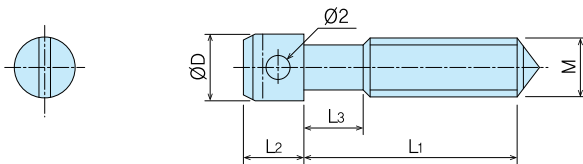
SEALING SCREWS

K-7(BS)



K-7

재질 ●K-7/황동(BS)
 표면처리 ●K-7/니켈도금
 Material ●K-7/Brass bar(BS)
 Finish ●K-7/Nickel plating



품번 Product No.	L1	L2	L3	ØD1	MX핏치 pitch	중량(g) Weight	입수 Lot
K-7-1	20	5.5	5.5	6	M5X0.8	4.2	100
K-7-2	16	5.5	5.5	6	M5X0.8	4	100
K-7-3	10	5.5	4	6	M5X0.8	2.8	100
K-7-4	20	5	5.5	5	M4X0.7	2.3	100
K-7-5	16	5	5.5	5	M4X0.7	2.1	100
K-7-6	10	5	3	5	M4X0.7	1.2	100