

# 둥근 라이너

ROUND TAPPED TUBES

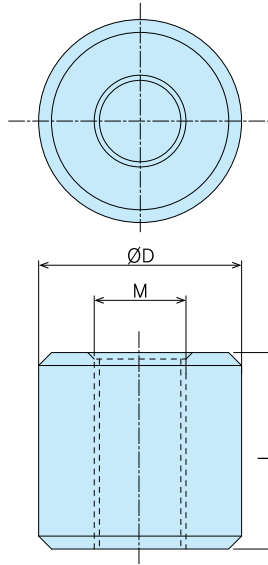
## H-10(SS)·SH-10(SUS)



SH-10-2



SH-10-10



품번 Product No.		OD <sub>1</sub>	L	M	중량(g) Weight	
SS	SUS				SS	SUS
H-10-1	SH-10-1	20	30	10	57.1	57.8
H-10-2	SH-10-2	20	30	8	63.1	63.5
H-10-3	SH-10-3	20	25	8	52.4	53.1
H-10-4	SH-10-4	20	20	8	41.7	42.3
H-10-5	SH-10-5	20	15	8	31.2	31.7
H-10-6	SH-10-6	15	20	8	20.6	20.9
H-10-7	SH-10-7	15	15	8	15.4	15.7
H-10-8	SH-10-8	20	10	6	22.3	22.7
H-10-9	SH-10-9	15	20	6	23.7	23.8
H-10-10	SH-10-10	15	15	6	17.5	18
H-10-11	SH-10-11	15	10	6	11.7	11.9
H-10-12	SH-10-12	15	15	5	18.4	18.6
H-10-13	SH-10-13	15	10	5	12.3	12.5
H-10-14	SH-10-14	10	10	5	4.7	4.8
H-10-15	SH-10-15	10	15	4	7.9	8
H-10-16	SH-10-16	10	10	4	4.7	5.2
H-10-17	SH-10-17	12	10	5	7.4	7.4
H-10-18	SH-10-18	15	10	4	12.7	13
H-10-19		20	20	12	33	
H-10-20		20	25	10	47.5	48
H-10-21		20	20	10	38.2	38.4
H-10-22		25	25	8	86.8	
H-10-23		15	30	8	31	
H-10-24		20	20	6	44.8	
H-10-25		15	30	6	35.5	35.6
H-10-26		12	10	6	6.6	
H-10-27		15	20	5	24.7	25
H-10-29		10	20	5	9.5	
H-10-30		15	15	4	19.3	19.4
H-10-31		10	20	4	10.5	
H-10-32		10	15	5	7	
H-10-33		12	15	5	10.8	
H-10-34		12	15	6	10.2	

특징	● 각종 사이즈 주문 제작됩니다.
Feature	● Various sizes are available for special ordered products.
재질	● H-10/철(SS400) ● SH-10/스테인레스(SUS304)
용도	● 배전반, 분전반, 계기반용 BOX 등
Material	● H-10/Rolled steel(SS400) ● SH-10/Stainless steel(SUS304)
Specific Use	● Distribution boards, meter boards, etc.

# 2단 라이너

TAPPED TUBES WITH STEP

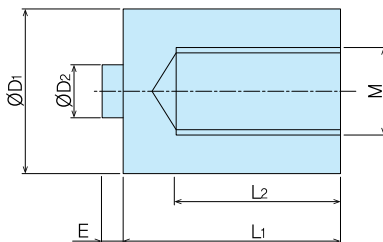
## H-11(SS)·SH-11(SUS)



SH-11-1



SH-11-2



특징	● 각종 사이즈 주문 제작됩니다.
Feature	● Various sizes are available for special ordered products.
재질	● H-11/철(SS400) ● SH-11/스테인레스(SUS304)
용도	● 배전반, 분전반, 계기반용 BOX 등
Material	● H-11/Rolled steel(SS400) ● SH-11/Stainless steel(SUS304)
Specific Use	● Distribution boards, meter boards, etc.

품번 Product No.		OD <sub>1</sub>	OD <sub>2</sub>	L <sub>1</sub>	L <sub>2</sub>	E	M	중량(g) Weight	
SS	SUS							SS	SUS
H-11-1	SH-11-1	15	4.9	20	15	2	8	21.8	21.7
H-11-2	SH-11-2	15	4.9	15	12	2	8	16.5	16.7
H-11-3	SH-11-3	15	4.9	15	12	2	6	18.3	18.5
H-11-4	SH-11-4	15	4.9	10	6	2	6	12.2	12.2
H-11-5	SH-11-5	12	3.9	15	12	2	5	11.6	11.6
H-11-6	SH-11-6	12	3.9	10	6	2	5	7.8	7.8
H-11-7	SH-11-7	10	3.9	15	12	1.5	5	7.6	7.3
H-11-8	SH-11-8	10	3.9	15	10	1.5	4	8.1	8.1
H-11-9	SH-11-9	10	3.9	10	6	1.5	5	5.1	5.1
H-11-10	SH-11-10	10	3.9	10	6	1.5	4	5.5	5.6
H-11-11		15	4.9	20	15	2	6	24.4	